

NI LOCAL GOVERNMENT - ICE Programme

David McCammick
29th October 2010

Background

- **Local Government response to the 11 Council, Business Services Organisation (BSO) model based upon projected savings of £438m over 25 years**
- **RPA unlikely to be implemented in the short/medium term at least – therefore the £438m figure comparison, based upon 11 councils, is no longer valid**
- **However, the ICE programme now presents an opportunity for local government to rise to the challenge of the financial constraints, increasing ratepayer expectations and the desire to deliver world class local government**
- **ICE is not RPA – can be progressed independently though if RPA returns these can be aligned**

Why ICE?

- Economic pressures - reduced rates income and high inflation equate to higher costs but less revenue
- Public expectation of continually improved services for minimal increase in rates
- Opportunity to drive and manage change within the sector
- Need to deliver value for money
- The Best Value duty
- Need for greater collaboration between local and central government
- We've said we can do it!

What is ICE?

- ICE refers to the programme to identify, share and implement opportunities for improvement, collaboration and efficiency across local government in Northern Ireland;
- ICE is a voluntary local government led reform and transformation programme open to all 26 councils;
- ICE seeks to help local government achieve its vision of delivering world class local government;

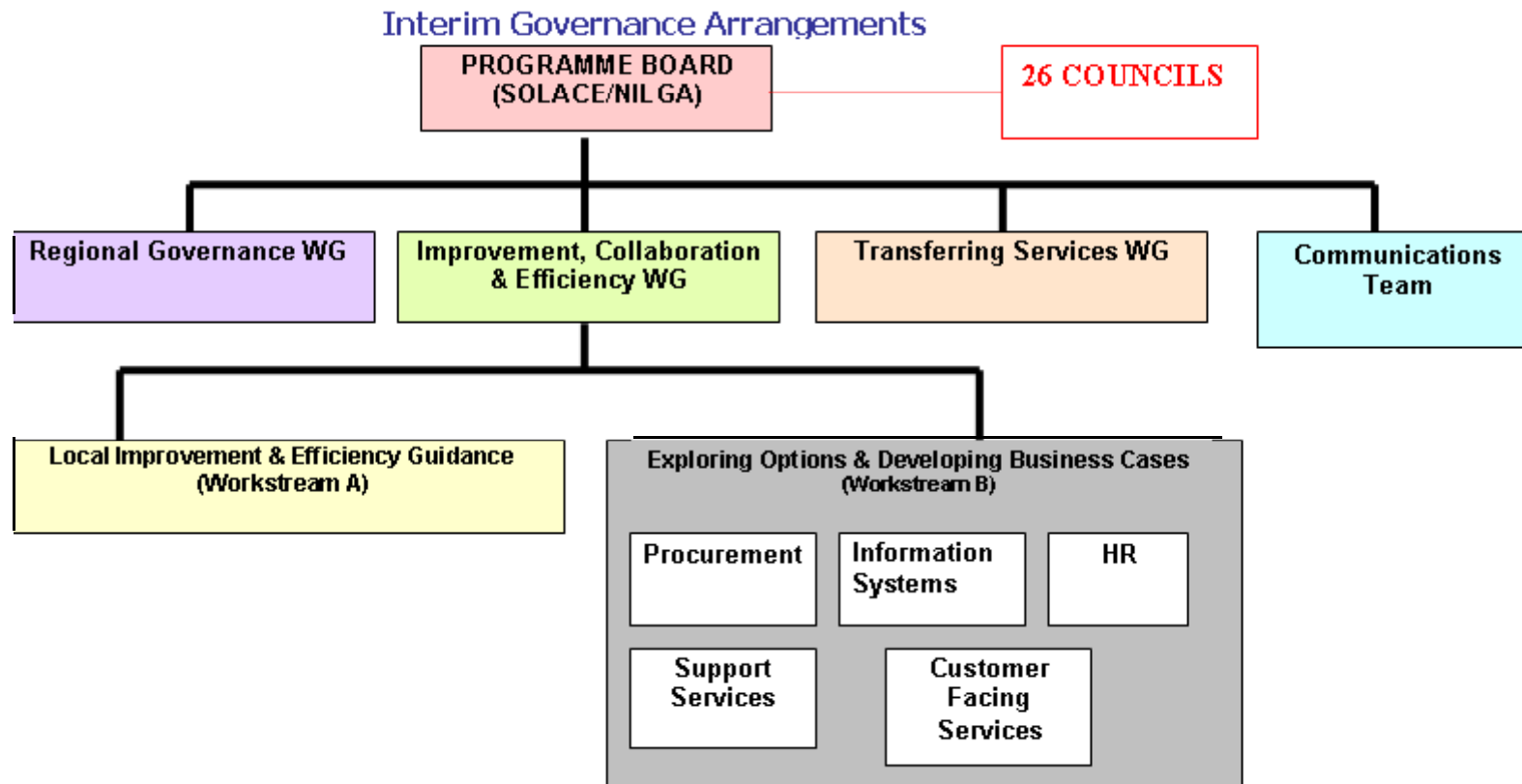
What do we mean by ICE?

Improvement

Collaboration

Efficiency

How is ICE being progressed?



What will it mean?

- **Councils working together to achieve significant efficiency savings;**
- **New opportunities to deliver services in new collaborative ways;**
- **Regional on-line support toolkit for participating Councils;**
- **A council led ICE process**

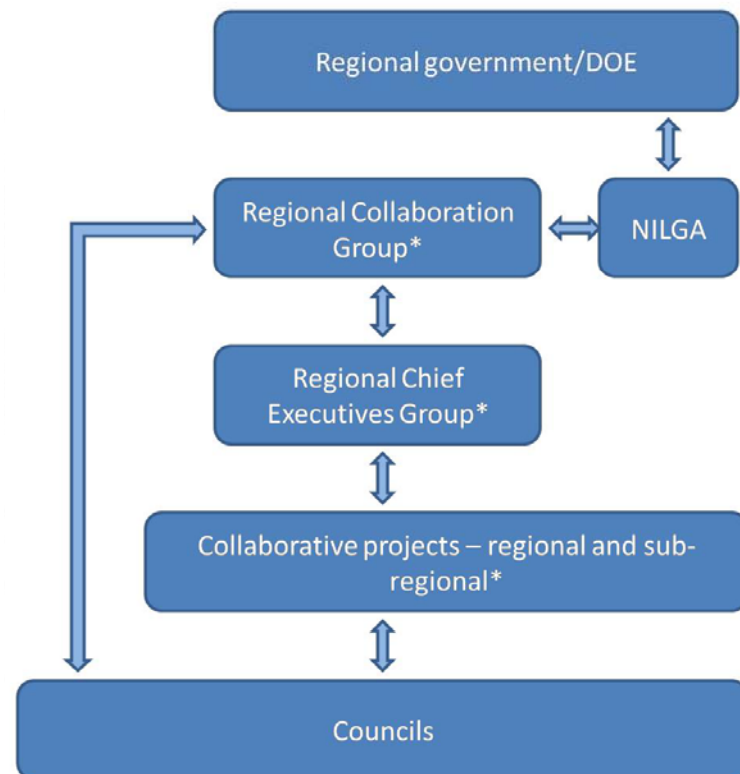
What is in it for us?

- **Building on existing good practices and improvement and efficiency initiatives;**
- **Assurance that local government services are delivered in an efficient, effective manner;**
- **Improved joined-up services for the customer;**
- **Opportunity to introduce co-terminosity with other service providers;**
- **Improved value for money – increased opportunities for delivering services more efficiently;**
- **Long-term financial stability;**
- **Improved staff morale and motivation;**
- **Improved consistency of internal processes; and**
- **Sharing of good practice across councils and with other sectors**

Looking ahead...

- **Governance**

- Proposals for establishment and operation under development
- Consultation expected December 2010
- New regional collaboration body in place early 2011



*supported by joint secretariat

Looking ahead...

- **‘Case for change’**
 - High level business case
 - Present range of ICE opportunities for consideration by councils
 - Expected end of 2010



Looking ahead...

- **Longer term ICE programme**
 - Concept, process and guidance under development
 - Based upon self-assessment and self improvement and integral to corporate planning cycle
 - Used to implement opportunities and to identify others
 - Communication and guidance ongoing
 - On-line support tool expected end 2010/early 2011

Conclusion

- Councils will remain as the key decision makers setting their own strategic direction
- Councils will be at the centre of the ICE programme – instead of change being forced upon councils
- Promotion of the ‘Place’ agenda, ie, Councils will be encouraged to work collaboratively with each other and on a multi-sector basis for the benefit of citizens and communities